

NAVIGATION HELP (COMPUTER VERSION)

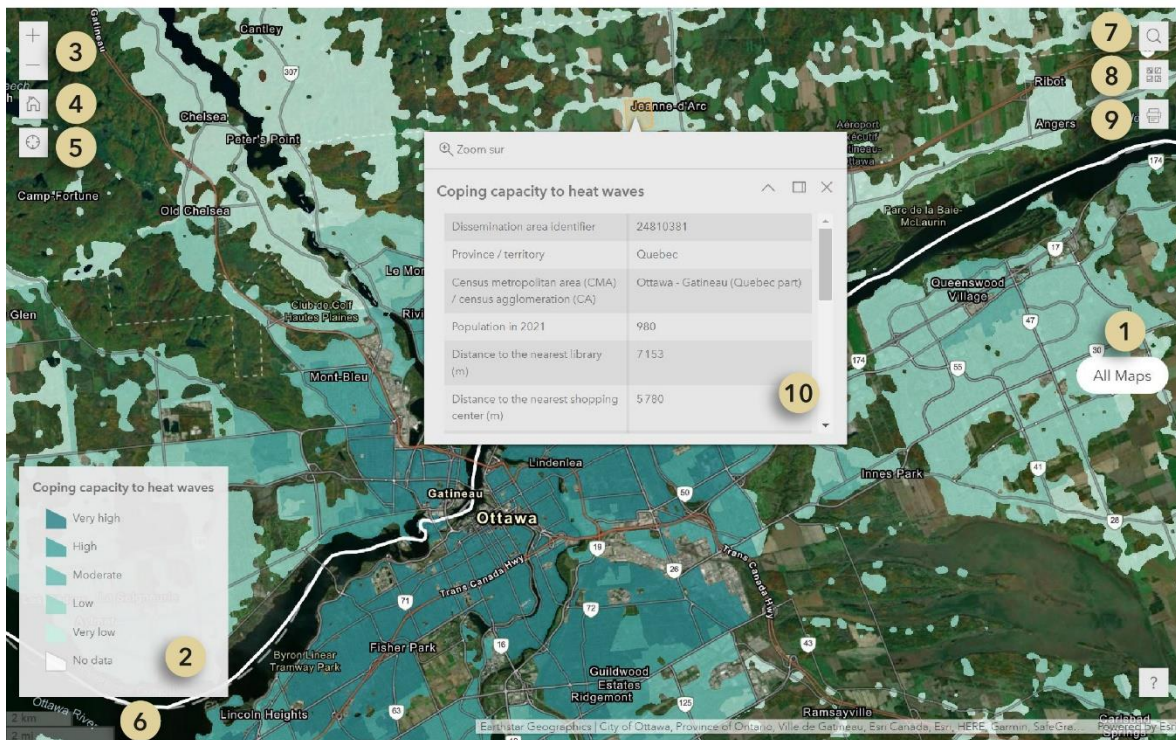
INTRODUCTION TO NAVIGATION

To move around on the map, hold down the left mouse button and a small hand will appear, allowing you to drag and reposition your view by moving the mouse. If you are using the touchpad on your computer, hold down the left button and move another finger across the touchpad to achieve the same result.

The 156 urban areas covered by the project "Mapping the vulnerability and exposure to extreme heat waves" are those that appear in light grey with a white border on the map of Canada. By zooming in on the region of your choice, the light grey layer will disappear to make way for the heat wave exposure layer.

You will find in the application a total of six themes:

- Exposure to heat waves
- Sensitivity to heat waves
- Coping capacity to heat waves
- Vulnerability to heat waves
- Vulnerability and exposure to heat waves
- Urban heat islands



ALL MAPS (Nº 1)

To view the different geographic information layers and change the layer displayed, click on the "All maps" button and select the one you are interested in. There are two modes: "1 map" and "2 maps". If you click on the "1 map" icon, you will be able to select the one you want to view from the 6 maps.

By clicking on the "2 maps" mode, you will be able to view and move around 2 maps simultaneously (vulnerability/exposure and urban heat islands).

LEGEND (Nº 2)

The legend of the selected layer appears automatically with the "1 map" mode and the name of the layer is at the top of the legend.

In the "2 maps" only the name of the theme appears in order to give more space to the data on the maps. However, the legend can be consulted by clicking on the "Layers" button of the respective maps, represented by the icon with three horizontal squares superimposed. Once the window is open, click on the word "Legend" to see it appear.

ZOOM (Nº 3)

You can use the plus and minus symbols to zoom in and out. You can also use the scroll wheel on your mouse to do this. If you're using your computer's touchpad, spread two fingers apart to zoom in on a location and bring two fingers together to zoom out.

Each map has an independent zoom in the "1 map" mode, so you have to zoom back to the region of your choice if you change the map displayed.

DEFAULT MAP VIEW (Nº 4)

Clicking on the house icon will return you to the default map view of Canada.

FIND MY LOCATION (Nº 5)

Find my location (target icon) allows the software to detect where you are and then zoom into your area. This tool may not work depending on your computer's privacy settings with respect to geolocation.

SCALE (Nº 6)

To give you an idea of the relationship between the distance measured on the map and the actual distance on the ground, you can check the graphical scale at the bottom left of the map. It is displayed in kilometers and miles.

SEARCH (Nº 7)

You can search for a specific location or address using the search tool. By entering one or more words in the text box, a drop-down menu will appear with choices. By selecting one of the options and pressing the magnifying glass symbol, the tool will zoom in on your search result.

BASEMAPS (Nº 8)

The basemaps library presents different options that you can select as a background map. By clicking on the icon, a drop-down menu with all the choices will appear. The default basemap for our application is "Imagery Hybrid".

PRINT (Nº 9)

The "Print" tool allows you to create a map representing the selected map area and select a layout that can be saved to your computer or printed later.

By clicking on the printer icon, a drop-down menu with different formats will appear. You must select one and then click on the print button. The procedure may take a few seconds. When you see a circle to the left of the map name, the operation is in progress. When the little circle turns into a page icon, you can click on it and a new tab will appear with your map. To save the map to your computer, right-click on it with your mouse or touchpad and a menu will appear with the option "Save Image As". You can then decide on the name and location of your file. If you have an Apple computer, click with two fingers at the same time to bring up the menu.

If you want to produce a map of a different layer or region, click the "Reset" button to start the process again.

When you click on the "Preview Print Extents" option, the blue area that appears is the area that will be on your map.

*We are aware that the maps produced do not have a legend, this is a problem out of our control that comes from the software that will be adjusted eventually.

POP-UP WINDOW (Nº 10)

You can click on a dissemination area on the map and a pop-up window will appear. This window contains information about the variables and indices. The "Zoom to" tool at the bottom or top of the window allows you to zoom in on the selected polygon.

*There is no pop-up window for the urban heat island map.